

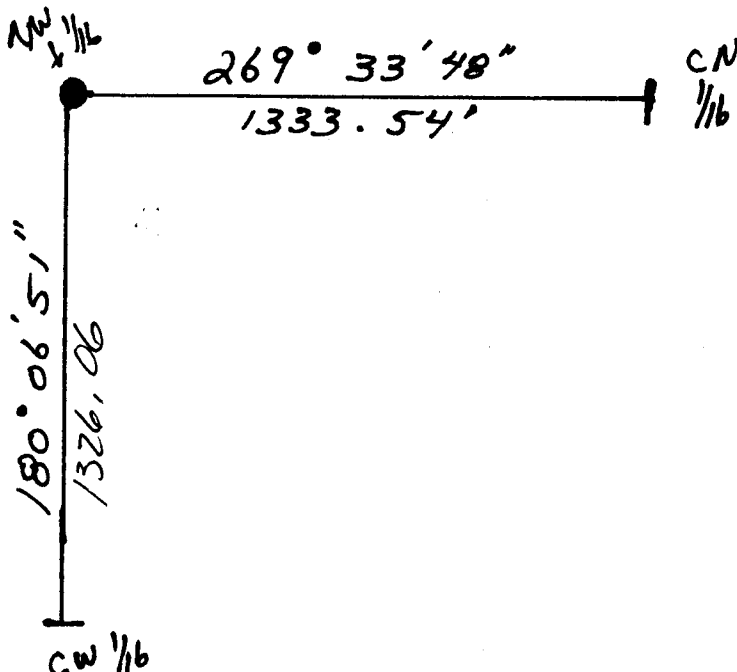
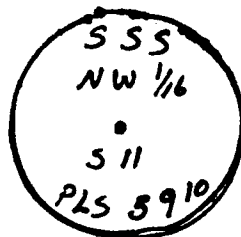
State of Wyoming Corner Record

(In compliance with the *CORNER PERPETUATION AND FILING ACT*, Wyoming Statutes, 1977, Section 36-11-101, et. seq., and the Rules and Regulations of the Board of Registration for Professional Engineers and Professional Land Surveyors)

Reverse side of this form may be used if more space is needed.

Record of original survey and citation of source of historical information (if corner is lost or obliterated). Description of corner monumentation evidence found and/or monument and accessories established to perpetuate the location of this corner. Sketch of relative location of monument, accessories, and reference points with course and distance to adjacent corner(s) (if determined in this survey). Method and rationale for reestablishment of lost or obliterated corner.

Set: 5/8 x 24" Rebar w/2" Alm. Cap
marked as shown



1994 NOV 21 AM 9:03

LARAMIE COUNTY CLERK
OFFICE

154088

Date of Field Work: 8-23-94 Office Reference: 94154

CROSS INDEX DIAGRAM

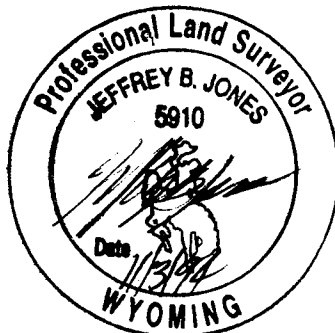
	1	2	3	4	5	6	7	8	9	10	11	12	13	14	15	16	17	18	19	20	21	22	23	24	25
A																									
B																									
C			6		5			4						3					2						1
D																									
E																									
F																									
G			7		8		9		10					11					12						
H																									
I																									
J																									
K																									
L			13		17		16		15					14					13						
M																									
N																									
O																									
P			19		20		21		22					23					24						
Q																									
R																									
S																									
T			28		29		28		27					26					25						
U																									
V																									
W																									
X			31		32		33		34					35					36						
Y																									
Z																									

Firm/Agency, Address

Steil Surveying Services
1102 W. 19th St.
Cheyenne WY 82003

This corner record was prepared by me or under my direction and supervision.
SEAL & SIGNATURE

Telephone Number: (307) 634-7273



0362

Corner Name: NW 1/16 Section: 11 T 14N R 66W 6th P.M. Cross-Index No.: 18 F

SBRPEPLS/PLSW: March 1994

BOOK 1388